



## President's Note

Welcome to the July ELRA newsletter. Being a lifelong Minnesotan, I have to talk about the weather. Too humid for me and the smoky air makes it worse. Happy to see the recent rains.

The weather was great for Emily Day. Did you see ELRA in the parade and visit our booth in the park? One of our 2025 goals was to be more visible in the community. We wanted to people to know Who We Are and What We Do. The Boat Parade was another opportunity to be visible; this time on the water. See the ELRA Activity Updates later in the newsletter.

A reminder to all members to please attend our Annual Meeting on August 9. This is the one and only member meeting of the year. We arranged with the National Loon Center to give us an update on the National Loon Center and the status of Minnesota's state bird.

Here is the full list of topics in this newsletter...

- > ELRA Annual Meeting
- > Boat Parade Report
- > ELRA Activity Updates
- > Wake Boat Map
- > EWM Treatment Notice
- > Membership Drive Reminder
- > Calendar
- > Board Roster
- > Be Water Wise

Take care and enjoy summer.

Russ Boverhuis, President

## ELRA Annual Meeting - Saturday, August 9

Please plan to attend the 2025 Annual Meeting of the Emily Lakes and Rivers Association. The meeting is Saturday, August 9, 2025 at Emily City Hall. Registration begins at 8:30 am, the business meeting starts at 9:00 am. The meeting agenda can be found on our website or by [clicking here](#). Once you are registered enjoy the coffee, juice and pastries while you mingle with the other attendees.

Our guest speaker this year is from the National Loon Center. They will talk about

the National Loon Center, loon biology, ecology, threats and what we can do to help the amazing loons thrive.

**Our By-laws state we must have a quorum of member properties present (10%) to conduct the annual meeting. If you cannot attend in person, you can help us reach our quorum by giving your proxy to another ELRA member. The other member votes on your behalf. The proxy holder must present the proxy when registering. A blank proxy form can be found on our website or by [clicking here](#).**

If there is something you want addressed at the annual meeting? Send your lake related questions to [elra@emilylakes.org](mailto:elra@emilylakes.org). We will do our best to answer all the questions at the meeting. Please submit your questions by August 4.

## Boat Parade a Success

The 2025 Boat Parade was a big success. More boats in the parade this year than anyone can remember. We hope everyone who participated enjoy the spin around the lakes.

As usual the parade did a loop around Lake Mary and then cruised down the Little Pine River. A nice surprise was the snack drop from the bridge. Smiles all around for the treats.

Also, for the first time ELRA awarded a "Best Decorated Boat" prize. The prize was a \$25 gift certificate to Sweets N' Such. The prize was given to the Klein-Tasler family (see picture). Enjoy.

Thanks to Jean and Tori for donating the snacks and prize.



## ELRA Activity Updates...

### ELRA Emily Day

ELRA had a booth in the park for Emily Day and entered a vehicle in the Emily Day Parade. This is part of our goal to get our name and what we do out in the community.

In the booth we had information about ELRA and handy information from the DNR. We can't say we had huge crowds, but we had a steady flow of questions.



Our entry in the parade was provided by Board member Doug Humphrey. Doug offered ELRA his customized 1956 Ford pickup for the parade. It was a big hit. We hope people noticed our banners on the side of the pickup.

### **AIS - Eurasian Watermilfoil**

We expect the survey crew to be on the lakes in the next few weeks to survey the lakes for Eurasian Watermilfoil. Hopefully we have the survey results in time to present them at the Annual Meeting. We will share the results in a newsletter too. Our fingers are crossed that we get a good report this year.

### **AIS - Purple Loosestrife**

One of our members received a report from the Loon Project that they spotted purple loosestrife while checking on loons. They said they came across several areas of purple loosestrife on the southern shore of Lake Emily.

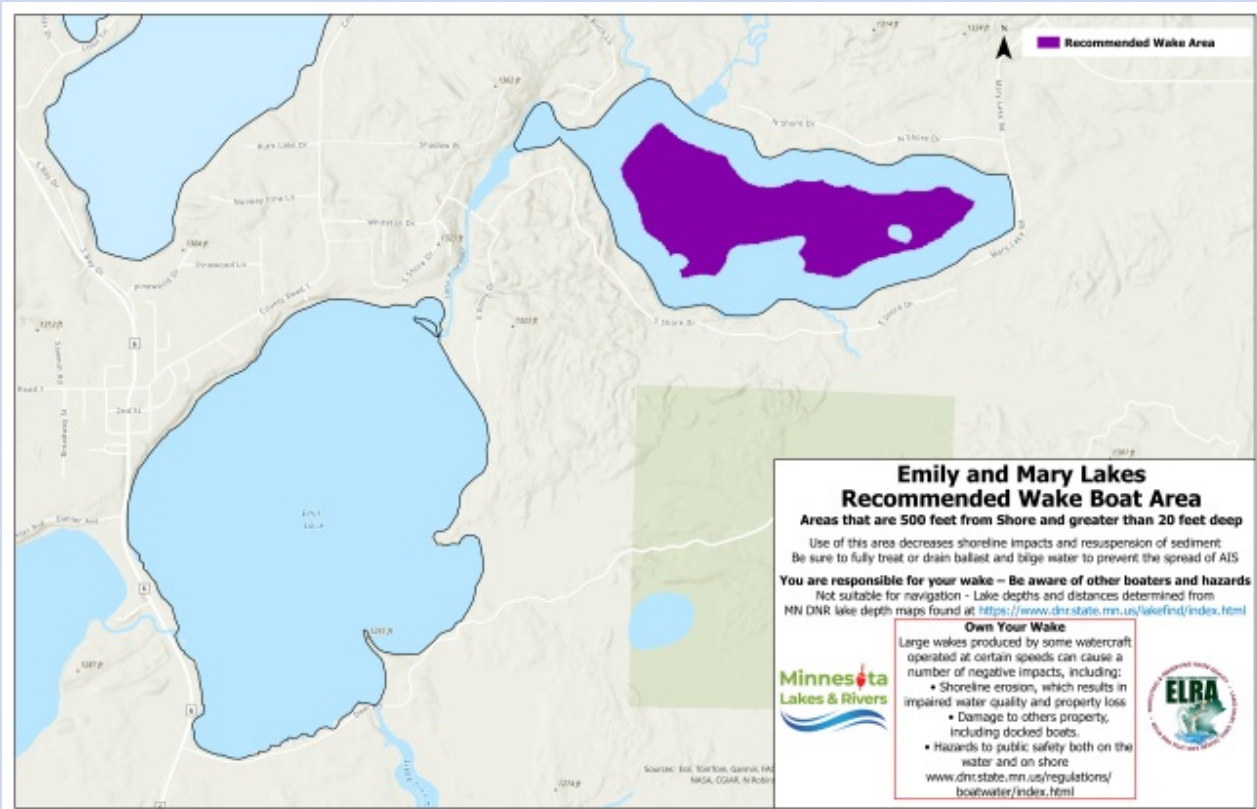
This is an invasive aquatic plant that can outcompete the natives. We are encouraging all members to check their property and take action to control it. This time of year is a good time to control it. The MN DNR has a good webpage on how to identify it and what you can do to control. Here is a link to the [purple loosestrife webpage](#).

### **AIS - Veliger Testing**

Veliger testing (zebra mussel larva) will be done shortly on Lakes Emily and Mary. In the past, the testing cost was covered by the county. This year we need to pay for it and use grant money to get reimbursement. A slight change in procedure, but it does allow us to pick the lab we want to use. Once we have survey results we will share the results in our newsletter.



**ELRA's Emily Day Parade entry thanks to Doug Humphrey.**



**Recommended Wake Boat Area (purple shaded areas)**

## Eurasian Watermilfoil Treatment

### NOTICE

**Emily Lakes and Rivers Association  
 P.O. Box 111  
 Emily, MN 56447**

The Emily Lakes and Rivers Association has contracted to treat Eurasian Watermilfoil, an Aquatic Invasive Species in Lake Emily and Lake Mary in 2025.

The Minnesota Department of Natural Resources has granted the Emily Lakes and Rivers Association a waiver of the requirement that the association obtain the signatures of approval of owners of lake-shore property. Instead, the Emily Lakes and Rivers Association will notify property owners of the treatment through alternate forms. This notice is one form that the Emily Lakes and Rivers Association is using to notify property owners. Other forms include but are not limited to notification through the lake association's web page, member newsletter and annual meeting.

With regards to the treatment for this year, 2025:

1. The proposed date for treatment: June 1, 2025 through October 31, 2025
2. The target species for the treatment: Eurasian Watermilfoil



3. The method of control or product being used: EPA and MDA registered aquatic herbicides, such as but not limited to Florpyrauxifen-Benzyl, Diquat Dibromide.

4. How landowners may request that control not occur adjacent to the landowner's property: If you desire that the treatment of Eurasian Watermilfoil not occur adjacent to your property, please notify the Emily Lakes and Rivers Association immediately at the following address and email address below:

Emily Lakes and River Association  
P.O. Box 111  
Emily, MN 56447  
[elra@emilylakes.org](mailto:elra@emilylakes.org)

## **2025 Membership Drive - *Never Too Late To Join***

***Thanks to everyone who has joined ELRA this year. If you have not joined, please do so. Dues are only \$50 per property and have not changed since 2018. ELRA uses the dues to treat AIS found in the lakes, stock walleye, and monitor water quality in our lakes. We need your support!***

Joining is simple. Simply, go to [ELRA's website](#) and 1) print and mail the [membership form](#) or 2) complete and pay using the form found on the website.

## **ELRA Calendar of Events**

### **Annual Membership Meeting**

Saturday, August 9 at 9:00 am at Emily City Hall. Registration starts at 8:30 am.

### **Board Meetings**

Thursday, September 18 at 7:00 pm

*Contact the Board at [elra@emilylakes.org](mailto:elra@emilylakes.org).*

## **ELRA Board Members**

President - Russ Boverhuis, Lake Emily

Vice President - Tori Ell, Lake Mary

Secretary - Mark Seifert, Lake Emily

Treasurer - Randy Manlick, Lake Emily

Director - Doug Humphrey, Little Pine River

Director - Jean McLeod, Lake Mary

Director - Ray Wagman, Lake Mary

*Contact the Board at [elra@emilylakes.org](mailto:elra@emilylakes.org).*

## **Be Water Wise... *key actions that protect our waters.***

**Clean** to remove plants, small animals and debris.

**Drain** all water. Remove drain plugs and keep plugs out during transport.

Dry shoreline equipment for 21 days before moving to another body of water.

Dispose of unwanted bait in the trash.

Never Release bait, aquarium pets or aquatic plants.

**To get the locations of all decontamination stations in Crow Wing County**

**Call (218) 824-1055**

**or**

**Text CWCDECON  
to 1-833-258-7509**

*This newsletter is sent to all property owners on Dahler, Emily, Mary, and the Little Pine River. The more members we have, the more we can do for the lakes and river. Thank you for your support.*

[Visit emilylakes.org](http://emilylakes.org)



Emily Lakes And River Association | PO Box 111 | Emily, MN 56447 US

[Unsubscribe](#) | [Update Profile](#) | [Constant Contact Data Notice](#)