



## President's Note

August newsletter time. No weather comment this month. You all know what the weather is doing by looking out the window. I truly hope everyone is enjoying the nice days when you can.

In this edition of the newsletter, the important topics are the results of our lake surveys for EWM and a recap of the annual meeting. Here is the full list of topics covered in this newsletter...

- > Annual Meeting Recap
- > Lake Survey Results
- > ELRA Activity Update
- > Wake Boat Map
- > EWM Treatment Notice
- > Calendar
- > Board Roster
- > Be Water Wise

Take care and enjoy the lakes. Labor Day is just around the corner.

Russ Boverhuis, President

## Annual Meeting Recap

ELRA's Annual Meeting was held Saturday, August 9 at 9:00 at the Emily City Hall. Attendance was good, but we would always like to see more members attend. Thanks to everyone who came. There were plenty of morning snacks to enjoy and it was a great time to learn what the lake association does for you and our lake community. If you missed the meeting, all the documents are on our website - [www.emilylakes.org](http://www.emilylakes.org).

Our meeting started with our guest speaker, Maddi Nistler from the National Loon Center. Maddi is the Education and Outreach Manager at the National Loon Center. She gave a very interesting presentation about the Loon Center and our Minnesota loons. She also offered to help us with our project to build loon nesting platforms.

After our guest speaker, we started the Reports to Members portion of the meeting. The [secretary's report](#), the audit committee report and the treasurer's reports were presented and approved. Next came the AIS reports and the fish stocking report. Information on those two topics can be found in the [Annual Meeting Presentation](#) and also further down in this newsletter. The Be Visible slides and pictures were

included in the presentation to show what we are doing to be more visible in the community.

Under Old Business we discussed the take-aways from the 2024 Annual Meeting. Most of those items have been covered in previous newsletters. The big item of note was the condition of the buoys in the channel. We reported that two buoys were new this year, but the other three need to be replaced. We brought one of the old buoys so people could see their condition. Members took note and donated \$160 toward new buoys.

The New Business items were the approval of the 2026 budget and the Q & A session. The 2026 budget was approved. The only question we received was about the lake levels and how it is impacting the channel to lake transition areas. Everyone agreed you had to be careful at those points. The take-away from the meeting was for the board to explore if something could be done to deepen those parts of the channel.

The final item on the agenda was the elections of new board members. Jean McLeod was not running again. Thanks Jean for your 6 years on the board. Mark Seifert ran for re-election and was elected. Mary Thesing was nominated from the floor and was also elected.

If there is something you want more information on, please contact a board meeting or email your question to [elra@emilylakes.org](mailto:elra@emilylakes.org).

## **AIS - Lake Surveys Completed**

Freshwater Scientific conducted surveys of lakes Emily and Mary during the week of August 4. The goal of these surveys is to assess how much Eurasian Watermilfoil (EWM) is in the lakes. ELRA received the results just before our annual meeting and the results were reported at the meeting. See document links at the bottom of this article.

The survey results were much better than 2024. A treatable amount of EWM was found in Emily, but only two plants were found in Mary and the Little Pine River. This is very good news and proof that chemical we used last year knocked back most of the EWM.

Freshwater Scientific and PLM are recommending we treat three areas in Emily, totaling 7.2 acres. Last year we treated over 22 acres in Emily. The treatment area will be along the south and west side of Emily. Mary had no treatable areas since only two solitary plants were found. Freshwater Scientific removed both those plants during the survey. Based on the PLM cost estimates, we should have enough funds to cover the treatment costs this year.

Treatment of Emily will occur during the later half of September. PLM must wait until the lily pads are no longer floating on the water.

Here are links to the information on our website...

[Annual Meeting Presentation \(shows cost estimate\)](#)

[Lake Emily Survey Results](#)

[Lake Mary Survey Results](#)

## **ELRA Activity Updates...**

### **Fish Stocking Plan**

ELRA plans to resume fish stocking after our forced hiatus last year. We will stock walleye fingerlings in Lake Mary once the water temperature has dropped. It is our hope that we can stock more walleye than usual this year. Naturally, this is dependent on supply and approval from the DNR.

Our fish stocking budget is \$2,100. This year we have \$3,100 available. Additional contributions from members for fish stocking increased how much we have available to spend this year. Besides our budgeted amount, we received \$400 in 2024 and \$600 in 2025 designated specifically for fish stocking. Thank you to everyone that contributed to this cause.

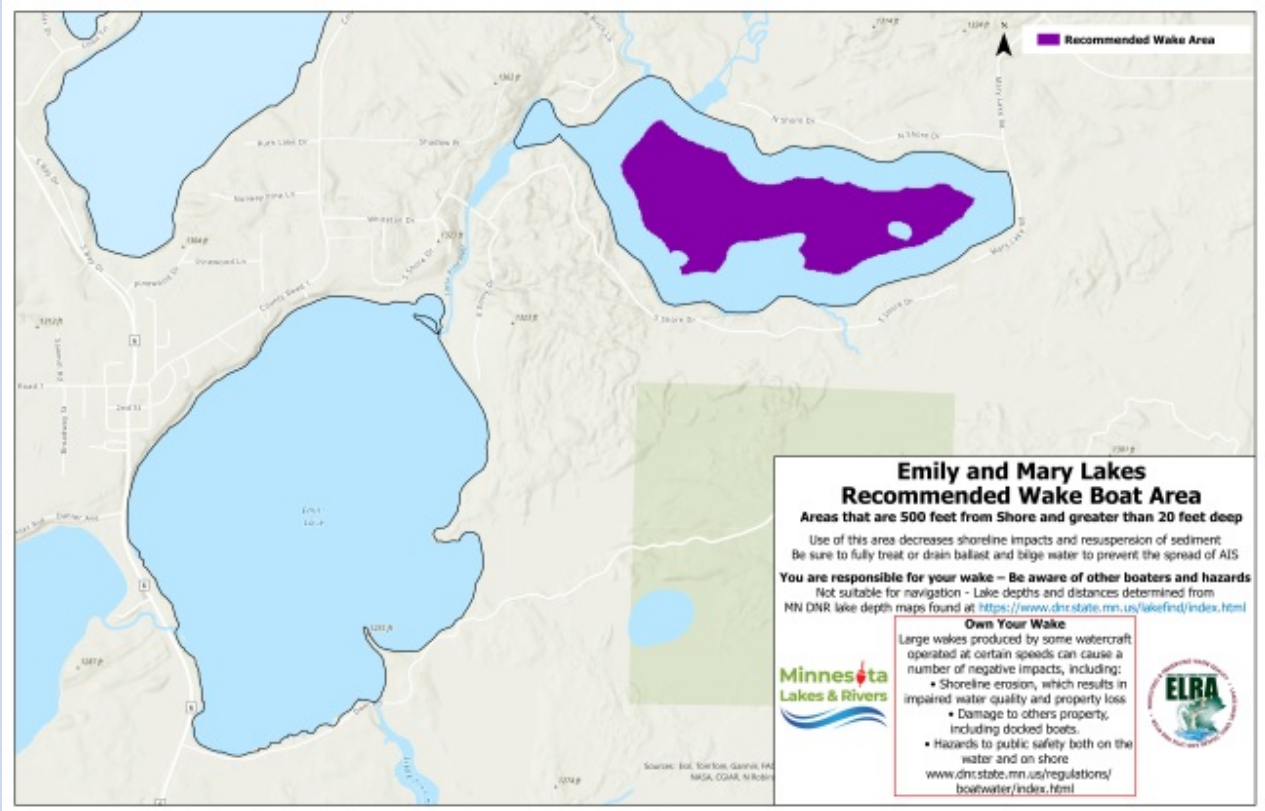
When the fish stocking is done, we will post that information in our newsletter and on Facebook.

### **AIS - Veliger Testing**

Veliger testing (zebra mussel larva) was done on Lakes Emily and Mary during the week of August 4. The water samples were sent to a lab in Detroit Lakes for analysis. Results are not expected until early September. When we have the results we will put them in the next newsletter and on Facebook.

In the past, the coordination and testing costs were covered by Crow Wing County as part of their AIS program. ELRA had to collect the water samples and deliver them to the county. This year, due to county budget constraints, the process has shifted to the lake associations. ELRA had to find a lab to do the testing, collect the water samples, deliver the samples to the lab and pay for the testing. We can request reimbursement from the county. The catch is the reimbursement amount is limited to \$200. Actual expenses look like they will be around \$275. Another unanticipated impact to our budget.





## Recommended Wake Boat Area (purple shaded areas)

## Eurasian Watermilfoil Treatment

### NOTICE

**Emily Lakes and Rivers Association**  
**P.O. Box 111**  
**Emily, MN 56447**

The Emily Lakes and Rivers Association has contracted to treat Eurasian Watermilfoil, an Aquatic Invasive Species in Lake Emily and Lake Mary in 2025.

The Minnesota Department of Natural Resources has granted the Emily Lakes and Rivers Association a waiver of the requirement that the association obtain the signatures of approval of owners of lake-shore property. Instead, the Emily Lakes and Rivers Association will notify property owners of the treatment through alternate forms. This notice is one form that the Emily Lakes and Rivers Association is using to notify property owners. Other forms include but are not limited to notification through the lake association's web page, member newsletter and annual meeting.

With regards to the treatment for this year, 2025:

1. The proposed date for treatment: June 1, 2025 through October 31, 2025
2. The target species for the treatment: Eurasian Watermilfoil
3. The method of control or product being used: EPA and MDA registered aquatic

herbicides, such as but not limited to Florpyrauxifen-Benzyl, Diquat Dibromide.

4. How landowners may request that control not occur adjacent to the landowner's property: If you desire that the treatment of Eurasian Watermilfoil not occur adjacent to your property, please notify the Emily Lakes and Rivers Association immediately at the following address and email address below:

Emily Lakes and River Association  
P.O. Box 111  
Emily, MN 56447  
[elra@emilylakes.org](mailto:elra@emilylakes.org)

## **ELRA Calendar of Events**

### **Board Meetings**

Thursday, September 18 at 7:00 pm

*Contact the Board at [elra@emilylakes.org](mailto:elra@emilylakes.org).*

## **ELRA Board Members**

President - Russ Boverhuis, Lake Emily  
Vice President - Tori Ell, Lake Mary  
Secretary - Mark Seifert, Lake Emily  
Treasurer - Randy Manlick, Lake Emily  
Director - Doug Humphrey, Little Pine River  
Director - Jean McLeod, Lake Mary  
Director - Ray Wagman, Lake Mary

*Contact the Board at [elra@emilylakes.org](mailto:elra@emilylakes.org).*

## **Be Water Wise... *key actions that protect our waters.***

**Clean** to remove plants, small animals and debris.

**Drain** all water. Remove drain plugs and keep plugs out during transport.

**Dry** shoreline equipment for 21 days before moving to another body of water.

**Dispose** of unwanted bait in the trash.

**Never Release** bait, aquarium pets or aquatic plants.

**To get the locations of all decontamination stations in Crow Wing County**

**Call (218) 824-1055**

**or**

**Text CWCDECON  
to 1-833-258-7509**

*This newsletter is sent to all property owners on Dahler, Emily, Mary, and the Little Pine River. The more members we have, the more we can do for the lakes and river. Thank you for your support.*

Visit [emilylakes.org](https://emilylakes.org)



Emily Lakes And River Association | PO Box 111 | Emily, MN 56447 US

[Unsubscribe](#) | [Update Profile](#) | [Constant Contact Data Notice](#)

---